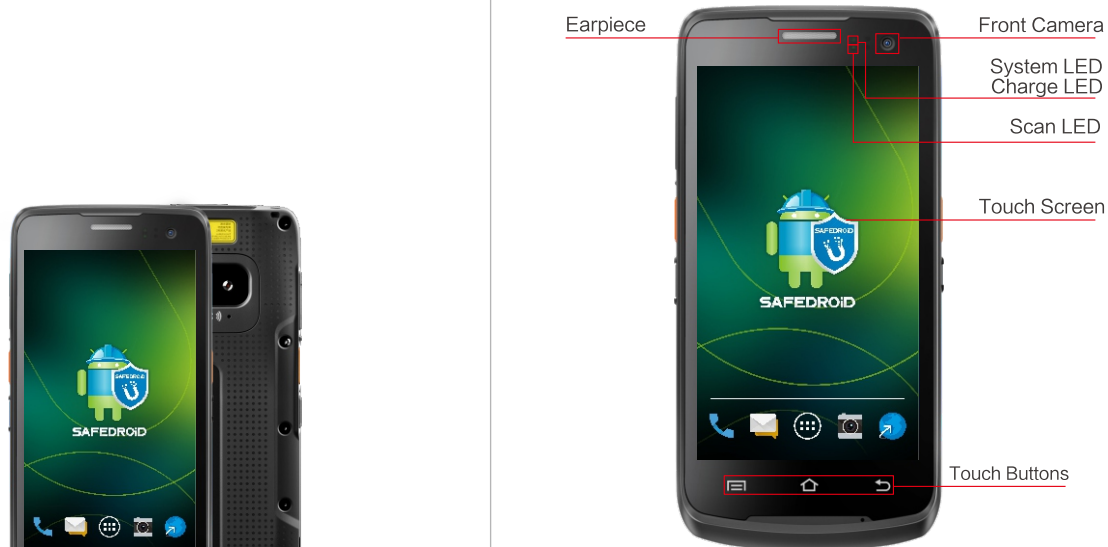


## i6310 Quick Reference Guide

1

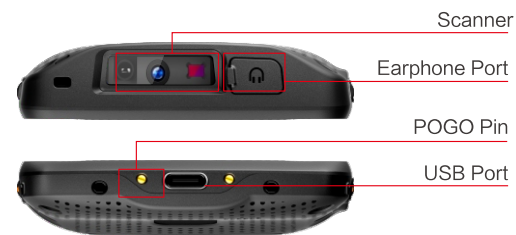
### Appearance and Buttons

#### Front view

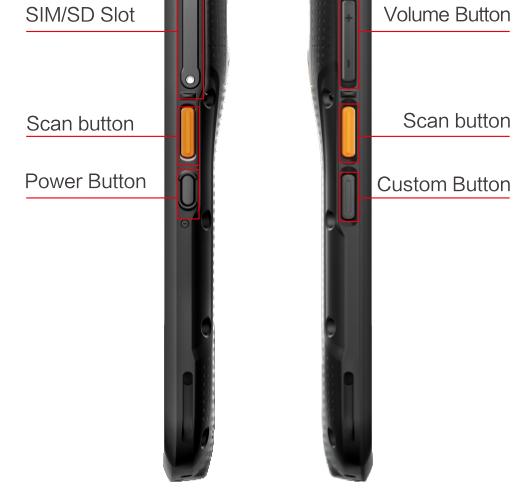


To turn on device: Hold power button until the device switches on.  
To turn off device: Hold power button during operation until the device shows a menu, select "Power off".  
To turn off display: Press the power button. Device also turn off the display automatically if left idle for some time. That amount of time can be configured at "Setting→Display→Sleep".  
To turn on the display: Press the power button lightly.

#### Side view



2



#### Rear view



3

### Installing SIM/ SD Card

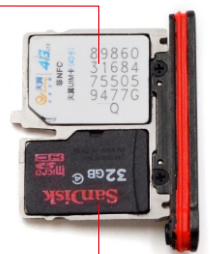
Take the thimble to remove the right card holder, place the SIM card 1, card 2 and SD card correctly on the card slot (as shown below):



SIM Card 2



SIM Card 1



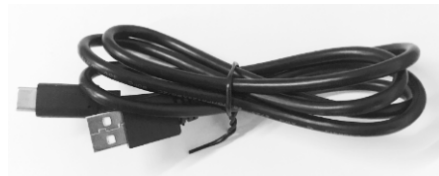
SD Slot

## Direct charging instructions

Plug the Type C USB data cable into one end of the power adapter and directly connect one end of the Type C USB data cable to the charging socket of the device for charging. The charging indicator on the device in charging state is red, and the red light is off after the charger is fully charged.



Power Adapter



Type-C Data Line

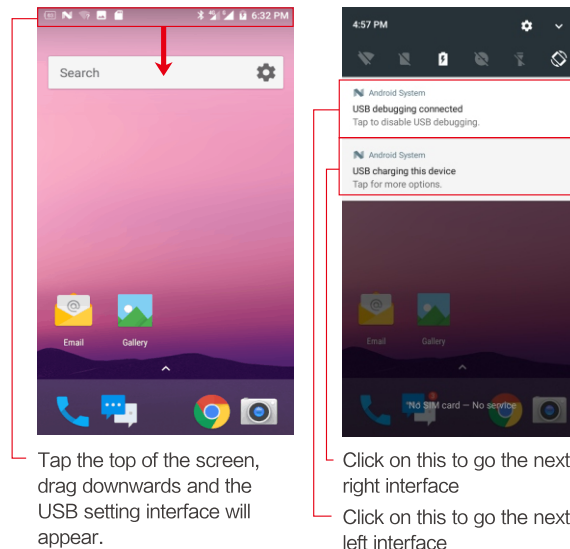
## Battery Operation

The device battery is Li-ion type battery and not removable, which should only be charged by using original power supply. Do not store battery in hot, humid, or corrosive environment. Do not break or crack battery. Do not store battery when it is fully charged completely drained. Please shut down the device to save. Note: The battery should be charged for at least 8 hours before the first use.



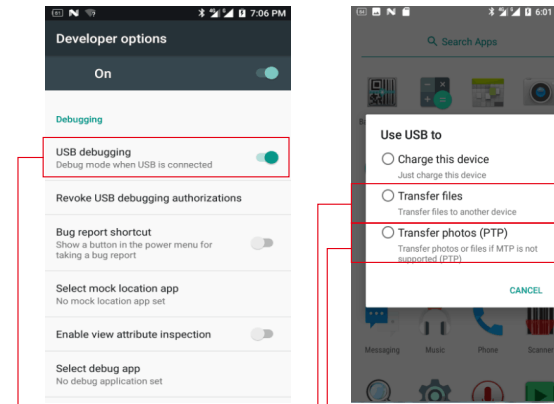
## Connecting to PC

After you install the Android driver or an Android smart phone assistant, you can connect the devices to your PC with USB cable provided. After device connected to your PC, the screen would display like this:



Tap the top of the screen, drag downwards and the USB setting interface will appear.

Click on this to go the next right interface  
Click on this to go the next left interface



To turn on debug mode

To transfer pictures  
Open the device memory and removable disk

Open the system storage and removable disk at the same time in Windows PC → my computer can view the storage device, and can transfer and store data  
Note: If you want to insert a memory card on your device to use it as a removable disk, if you do not insert a memory card, you will not see a removable disk on my computer

## Important notice on lithium ion battery

- 1) Charge the battery only with original Unitech power adaptor supplied in the box
- 2) Do not store the device with battery installed for long period of time
- 3) If long period storage is required, remove battery from device.
- 4) During long storage period, maintenance work is required at every 3 months period. During maintenance, discharge the battery completely, and then charge to 60% – 70% (or 3.8V – 3.9V).

- 5) Store battery in dry, cool environment. Temperature should be –20 to 40 degree Celsius and relative humidity should be 45% to 85%
- 6) Charge battery at 5 to 45 degree Celsius
- 7) Do not operate the device outside the recommended temperature, which is from –20 to 60.
- 8) Do not install a third party battery into Urovo device

## Regulatory Compliance Statements

Unitech Electronics Co., Ltd herewith declares that the unitech product is in compliance with the essential requirements and all other provisions of the RED 2014/53/EU directive, the EMC 2014/30/EU directive and the Low Voltage 2014/35/EU directive. The declaration of conformity is available for download at: <https://portal.unitech.eu/public/Safetyregulatorystatement>

## RoHS Statement

This device conforms to RoHS (Restriction Of Hazardous Substances) European Union regulations that set maximum concentration limits on hazardous materials used in electrical and electronic equipment.